

There is a possibility of changing the 'Code' and/or 'Lot No.'

'Protein conc.' and 'Activity' might vary between lots.

#### Data sheet

Enzyme ; **6-Phosphogluconate dehydrogenase**

Code ; PGD-75-01

Lot No. ; 1-H003A

Protein conc. ; 0.32 mg/ml

Volume ; 1 ml

Form ; 20 mM Tris-HCl (pH 7.5)

Storage ; -20 °C

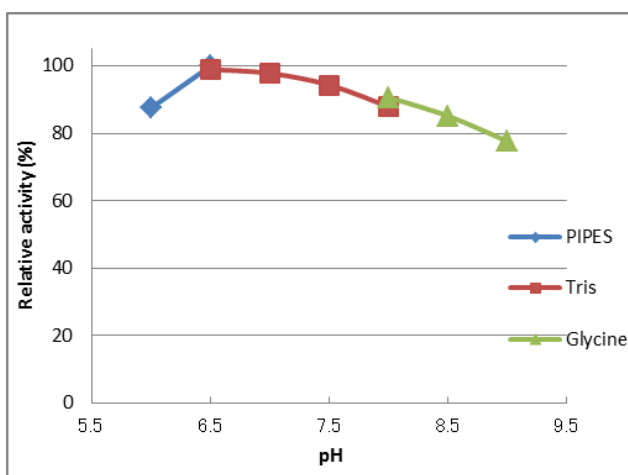
Activity ; 10.3 U/ml

Notes ; For research use only

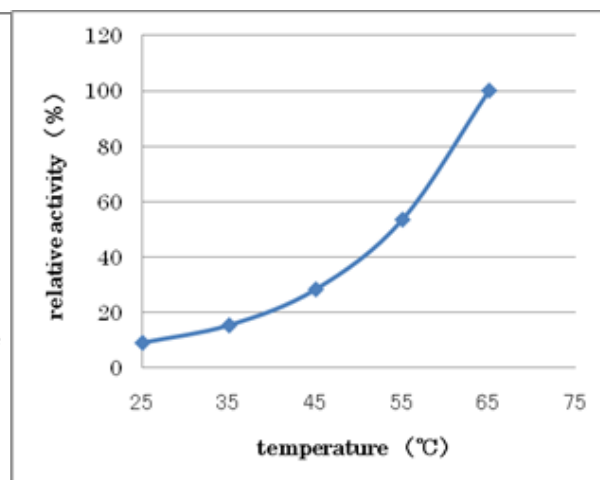
#### Activity measurement

Reaction mix (50 mM PIPES-KOH (pH 6.5), 1 mM 6-Phosphogluconate, 10 mM MgCl<sub>2</sub>, 0.3 mM NADP<sup>+</sup> and appropriate amount of the enzyme) was incubated at 65 °C and A<sub>340</sub> was monitored. One unit is defined as the amount of enzyme producing 1 μmol of NADPH ( $\epsilon_{340}=6.22 \text{ mM}^{-1} \text{ cm}^{-1}$ ) per 1 minute using 6-Phosphogluconate as a substrate.

#### pH profile



#### Temperature profile



Thermostability

